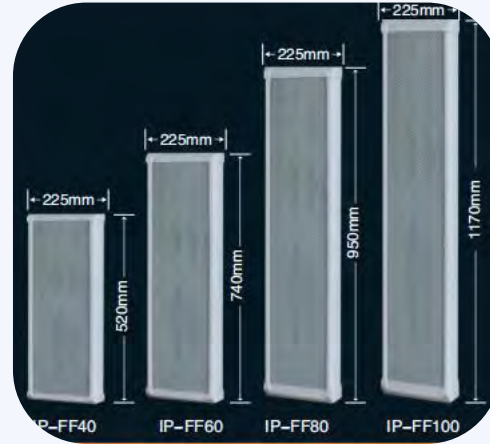


Public Address Audio System—IP network broadcast system equipment



Wood material

**IP digital network speaker
(ZH-IP206)**



**IP network Column Speaker
(IP-FFF series)**

Specification

IP-FF40	40W
IP-FF60	60W
IP-FF80	80W
IP-FF100	100W

Function description

- Built-in embedded network speech decoding module, into the network audio stream synchronous reception and decoding: the use of embedded PC technology and DSP tone processing technology design: the use of high-speed industrial ARM chip, start-up time up to milliseconds; Improve the stability of equipment;
- TCPIP high quality digital audio transmission, sound quality up to CD level bit speed 320kdps)
- Using fixed static IP address, when the network changes the address will not be lost, stable work;
- The machine is equipped with a home address reset switch, reset can restore the factory setting 1 network,2 LINE input,2 MIC input: to achieve local external sound source input and emergency broadcast input. Each channel has an independent volume adjustment; 1 EMC input, priority network and other external signals, so that a variety of linked emergency alarm equipment diversification :EMC input has the highest priority, network alarm signal priority local MIC input, local M-just C input priority over AUX and network music, local AUX and network music signal no priority.
- Each MIC/LINE signal input has an independent digital volume adjustment.

Public Address Audio System—IP network broadcast system equipment



Function description

- Built-in embedded network voice decoding module, into the network audio stream synchronous reception and decoding: using embedded PC technology and DSP audio processing technology design: using high-speed industrial ARM chip, start-up time reaches millisecond level; Improve the stability of equipment;
- TCP/IP high quality digital audio transmission, sound quality up to CD level bit speed 320kdps) using fixed static IP address, when the network changes the address will not be lost, stable work; The machine is equipped with P address reset switch, reset can restore factory Settings;
- 1 network,2 LINE inputs,2 MIC inputs; To realize local external sound source input and emergency broadcast input, each has an independent volume adjustment; 1 EMC input, priority network and other external signals, so that a variety of linked emergency alarm equipment diversification; EMC inputs have the highest priority, network alarm signals have priority over local MIC inputs, local MIC inputs have priority over AUX and network music, and local AUX and network music signals have no priority;
- Each MIC/LINE signal input has an independent digital volume adjustment.
- Full digital treble, bass and master volume adjustment, allowing the sound quality to be adjusted freely: the adjustment is clearer, flexible and accurate;

Specification

MD-60	60W
MD-120	120W
MD-180	180W
MD-250	250W
MD-350	350W
MD-500	500W
MD-650	650W
MD-800	800W
MD-1000	1000W
MD-1500	1500W

- Expansion terminals are reserved and can be configured with a DC24V power module. With a three-wire alarm strong cutting output interface, the host controls the corresponding control area alarm: no additional 24V strong cutting power supply, the number of audio control is not limited; Reserve one RS232 serial port for easy expansion;
- Automatic fault detection and LED prompt function, automatic detection system function and overload, high temperature, overvoltage protection; Pressure circuit processing effectively avoids audio output signal distortion;

Public Address Audio System—IP network broadcast system equipment



**IP network audio converter
(ZH-IP220)**



**IP network fire access device
(ZH-IP211)**

Function description

- Standard chassis, 2U height; High-grade aluminum panel with advanced polishing;
- Adopt fixed static IP address, stable work;
- Adopt embedded PC technology and DSP audio processing technology;
- 1 RJ45 download address interface for different places of the network to modify the address;
- Transmission of multiple sets of audio program content through the network;
- Single device has 1 audio matrix switching function;
- 1 LINE/MIC signal input, 1 independent network TCP/IP coding function; Independent volume adjustment; High quality digital audio transmission, no noise, can be one-way call;
- Sound quality can reach CD level (audio file bit speed is 32-320kdps adaptive);

Product description

- 16 zones are automatically activated, which can be extended to 1024 zones, and up to 80 adjacent zones are automatically triggered.
- Fire alarm intelligent interface, support contact input and DC voltage input. Programmable setting of N+1, N+2, N+3, N+4 alarm rules.
- Built-in digital alarm player, to achieve a more user-friendly partition independent voice alarm function;
- RJ45 transmits alarm signals through the interface, easy to connect;

Public Address Audio System—IP network broadcast system equipment



**IP broadcast paging
microphone**

ZH-IP207

Product description

- With dual-port HUB (HUB), it can directly access the local area network (LAN), play network audio, and accept the access and control of servers and other IP network devices;
- Network fault self-diagnosis, network and service status display. The core equipment of network intercom can directly paging and two-way intercom to various types of terminal equipment;
- External gooseneck Microphone, built-in Speaker;
- Offline Function, can directly access the network to use, paging and intercom without server support, the use of extremely convenient and simple;
- Multi-party calls are supported during intercom;
- Paging and intercom permission control Function;
- Line input and output to transmit local audio signals to the network;
- With SD card, you can directly play the music program of SD card, you can convert the music of SD card into network data stream, and pass to other terminal devices.



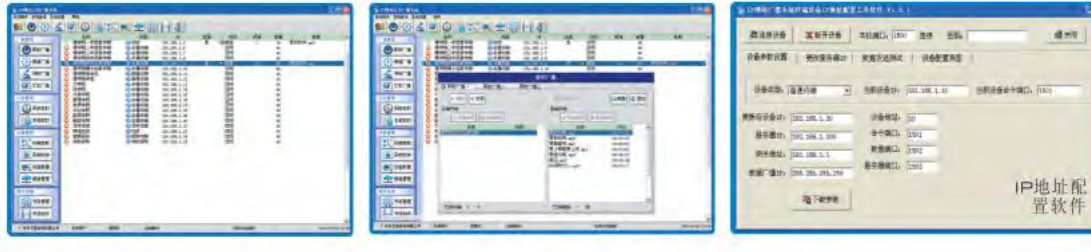
**IP digital network broadcast power amplifier
terminal**

ZH-IP208

Product description

- 1 network signal input, 1 audio signal output.
- 2-way power control (220V), the maximum power is 1200W.
- Compatible with TCP/IP network protocol, to achieve cross-gateway device control and status real-time monitoring.
- High-grade aluminum panels with advanced polishing.

Public Address Audio System—IP network broadcast system equipment



IP digital network broadcasting software

ZH-IP202

Product description

System management software is an important part of IP network broadcasting system, it can be installed in any computer in the network, used for the entire IP network broadcasting system equipment configuration, channel configuration, task configuration, program library management, user management, permission management, terminal equipment status query and control operation of terminal equipment.

- The system terminal equipment status real-time monitoring query management function;
- Configuration management Function in terminals and peripherals;
- Channel song configuration management function;
- It has the Function of editing and managing server scheduled tasks;
- Terminal SD program file download management function;
- Real-time broadcast control management function;
- Channel broadcast control management function;
- Equipment control management function;
- Have media resource program library management function.
- Server and device timing function;
- Program production and file upload and download management function;
- The system user and permission allocation management function;
- Directly access the standard TCP/IP protocol network, and use the existing network to achieve multi-network integration. The embedded system is used as the main architecture to avoid virus attacks on the broadcast host;
- When the server in the general control room is disconnected, the broadcast use of each sub-control room and partition will not be affected;
- Campus broadcast software is the core of the total campus audio broadcast system, which completes the permission management Function of the entire campus, provides data interface services for the acquisition and broadcasting of various audio broadcasts, and provides network broadcasting equipment in various regions with timed playback and real-time acquisition media services, and responds to the playback requests of each broadcast control equipment. After the audio program menu is arranged, it can be uploaded to the system service through the campus network, and the management personnel can log in to modify it through the broadcast management software;
- Automatically detect faulty network broadcast devices;
- Automatic control and manual operation platform with programming accurate to seconds
- Easy to operate, intuitive display. It can display the current working status of each network terminal in real time, and has man-machine dialogue function;

Public Address Audio System—IP network broadcast system equipment



**IP network broadcast
equipment**

ZH-IP201

Product description

IP network broadcast server is the core of network audio broadcast system, which monitors the working status of all terminals and external devices in the whole network broadcast system in real time, and responds to all kinds of service requests of all terminals in real time.

- Industrial server, high stability, high reliability.
- Industrial-grade low-power processor, equipped with solid state drive, faster data reading and storage, stronger anti-fall and anti-shock performance.
- The system provides a powerful channel broadcast management Function, supporting multiple sets of channel broadcast online simultaneous broadcast, each channel broadcast can support timed task management mode or manual control management mode.
- The system has multiple sets of scheduled task management schemes, supporting multi-mode operation of scheduled tasks, scheduled tasks can be controlled by week cycle, or can be executed by 24 hours a day scheduled tasks, through flexible scheduled task configuration, fully suitable for a variety of complex applications.